

## Anti-beta Actin antibody (C-term)

<b>Cat. No.</b>	AbC-2004
<b>Size</b>	400ul
<b>Host Species</b>	Rabbit
<b>Cross reactivity</b>	Human, Mouse, Rat
<b>Tested application</b>	ELISA, Western blot (Other application is not tested)
<b>Immunogen</b>	Synthetic peptide. EYDESGPSIVHRKC (361-374aa) of human beta actin.
<b>Form</b>	Liquid
<b>Storage</b>	Store at -20°C.
<b>Purification</b>	Ammonium sulfate precipitation
<b>Concentration</b>	0.5mg/ml
<b>Storage buffer</b>	0.02% sodium azide, 50% glycerol in PBS
<b>Clonity</b>	Polyclonal
<b>Isotype</b>	IgG
<b>Positive control</b>	HEK 293 cell

### Background

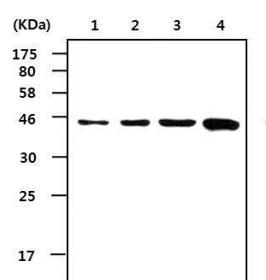
Actins are highly conserved proteins that are involved in cell motility, structure and integrity, processes that are crucial for tissue development and the development of organism. Beta actin is one of six different actin isoforms which have been identified. The actin cytoskeleton is one of the principal drivers of cell motility and is capable of responding to complex signaling cascades. Recent evidence suggests that it may play key roles in regulating apoptosis and aging. Beta-actin protein and mRNA levels are often used as a reference for comparing changes in cellular protein/mRNA levels by Western or Northern blots.

### Recommended Dilution

ELISA	1/5000 – 1/10000
Western blot	1/1000 – 1/2000

*Optimal working dilutions must be determined by end user.*

### Image



Western blot analysis of cell lysate :  
 Lane 1: HEK293 cell lysate  
 Lane 2: MCF-7 cell lysate  
 Lane 3: NIH3T3 cell lysate  
 Lane 4: L6 cell lysate

### Reference

- 1) Doherty GJ, McMahon HT. *Annu Rev Biophys.* 37:65-95, 2008
- 2) Asaka Y, Jugloff DG, Zhang L, Eubanks JH, Fitzsimonds RM. *Neurobiol Dis.* 21(1):217-27, 2006

Note : For research use only. Not for use in diagnostic procedures.