

Anti-beta Actin antibody (N-term)

Cat. No.	AbC-2002
Size	200ul
Host Species	Rabbit
Cross reactivity	Human, Mouse
Tested application	ELISA, Western blot (Other application is not tested)
Immunogen	Synthetic peptide. DDDIAALVVDNGSG (2-15aa) of human beta actin.
Form	Liquid
Storage	Store at -20°C.
Purification	Immunoaffinity chromatography purified.
Concentration	1mg/ml
Storage buffer	0.02% sodium azide, 50% glycerol in PBS
Clonity	Polyclonal
Isotype	IgG
Positive control	A431 cell

Background

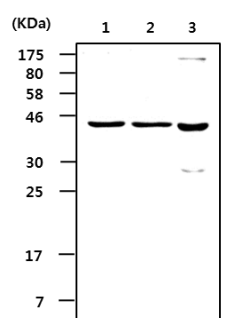
Actins are highly conserved proteins that are involved in cell motility, structure and integrity, processes that are crucial for tissue development and the development of organism. Beta actin is one of six different actin isoforms which have been identified. The actin cytoskeleton is one of the principal drivers of cell motility and is capable of responding to complex signaling cascades. Recent evidence suggests that it may play key roles in regulating apoptosis and aging. Beta-actin protein and mRNA levels are often used as a reference for comparing changes in cellular protein/mRNA levels by Western or Northern blots.

Recommended Dilution

ELISA	1/5000 – 1/10000
Western blot	1/2000 – 1/5000

Optimal working dilutions must be determined by end user.

Image



Western blot analysis of cell lysate :
 Lane 1: A431 cell lysate
 Lane 2: BT-474 cell lysate
 Lane 3: NIH3T3 cell lysate

Reference

- 1) Doherty GJ, McMahon HT. *Annu Rev Biophys.* 37:65-95, 2008
- 2) Asaka Y, Jugloff DG, Zhang L, Eubanks JH, Fitzsimonds RM. *Neurobiol Dis.* 21(1):217-27, 2006

Note : For research use only. Not for use in diagnostic procedures.